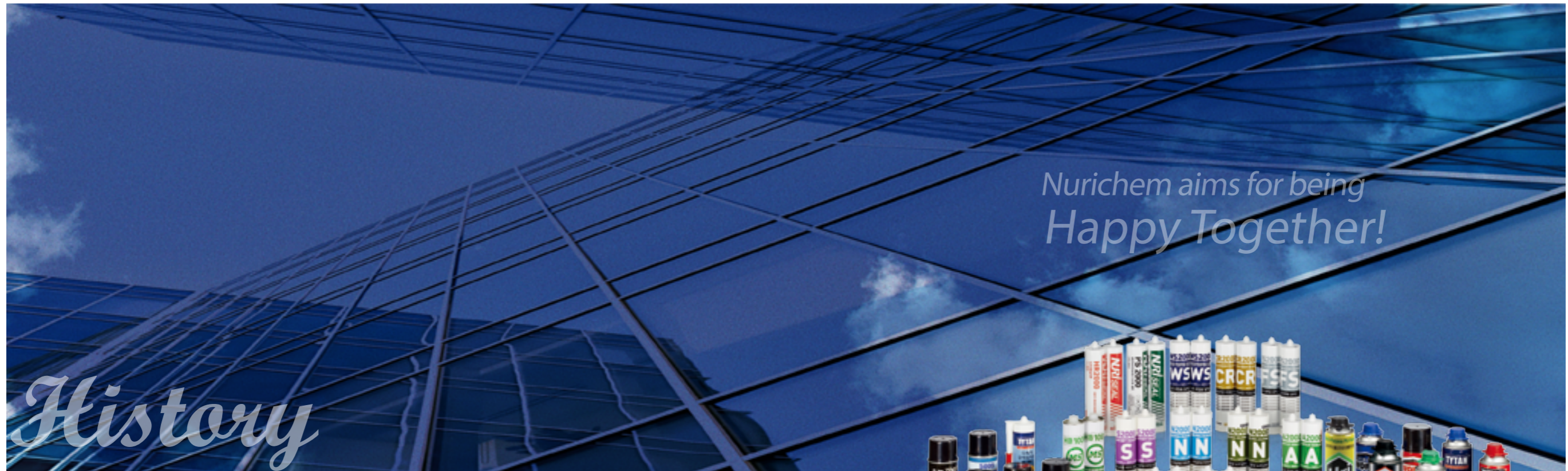




Headquarter : 1001 Daeyoung Golden Valley, 257 Gyeongsu-daero, Uiwang-si, Gyeonggi-do, 16074, Rep. of Korea  
Tel : 82-31-450-6633, Fax : 82-31-450-6630, E-mail : nurichem@nurichem.com

Factory : 9 Bongjae-gil 63beon-gil, Dunpo-myeon, Asan-si, Chungcheongnam-do, 31411, Rep. of Korea  
Tel : 82-41-532-2942, Fax : 82-41-532-2947





- 2014 > Obtained ISO14001 Certification  
> Obtained JIS Certification
- 2013 > Certified promising export company
- 2011 > Obtained KS Certification
- 2010 > Obtained ISO9001 Certification  
> Moved to enlarged factory in Asan City, Chungnam, Korea
- 2005 > Established joint venture factory in China
- 2002 > Established Pyeongtaek Factory, Korea
- 1992 > Founded company

Nurichem, founded in 1992, is a market leader providing solutions in sealing and bonding business. We produce and distribute a wide range of sealants (silicone, acrylic, hybrid, ... etc.), adhesives, PU-foams, caulking guns, industrial aerosols, ... etc. meeting various market demands.

Nurichem grows continuously expanding product portfolios and supplying quality-proven chemical building materials to more than 20 countries.

In order to develop new technology for environment-friendly and energy-saving products for our future world, Nurichem makes an extraordinary effort cooperating with academic institutes and some of advanced technology partners.

The win-win success with the customers is the pursuit of Nurichem.

# Sealant Products



## Products Line-up

Use	Product	Curing Type	Movement	Packaging
Glazing	N2000	Neutral	±30%	ctg
	N2000 PRO	Neutral	±30%	ctg
Glazing	G2000	Acetic	±30%	ctg
Kitchen & Bathroom	S2000	Neutral	±50%	ctg
Interior & Crack	A2000	Moisture Evaporation	±10%	ctg
Stone & Panel	N9000	Neutral	±30%	ssg
Exterior Panel	WS1000(LM)	Neutral	±50%	ctg/ssg
	WS2000(HM)	Neutral	±30%	ctg
Window Frame	BS2000	Neutral	±50%	ssg
Pair Glazing	Pair Seal	Neutral	±30%	ssg
Polycarbonate	PS2000	Neutral	±30%	ctg
Clean Room	CR2000	Neutral	±30%	ctg
Heat Resistance	HR2000	Neutral	±50%	ctg
Fire Stop	FS1000	Moisture Evaporation	±10%	ctg
	FS2000	Neutral	±30%	ctg
Repair	HB1000	Neutral	±30%	ctg

## N2000

### For Glazing



### Neutral silicone sealant for glazing(General)

- Application
  - General glazing(Not recommendable for pair-glazing)
  - Sealing aluminium and PVC window frames(AL+Glass, PVC+Glass)
  - Sealing containers and prefabricated houses
  - Wide variety of sealing applications

- Characteristics
  - No acetic smell - Non sagging
  - Good adhesion to most materials

Tack Free	Less than 20 min	Cure Time	5 ~ 7 days
Specific Gravity	1.00 ± 0.05(Clear), 1.47 ± 0.02(Colored)	Hardness Shore A	30 ~ 40
Tensile Strength	10 ~ 15kgf/cm <sup>2</sup>	Elongation	200 ~ 300%
Movement Allowance	± 30%	Packaging	300ml ctg

Color: Clear, Translucent, White, Gray, Light gray, Ivory, Gold, Black, Brown, Wood, Cherry, Green, Blue, Red



## N2000<sup>PRO</sup>

### For Glazing



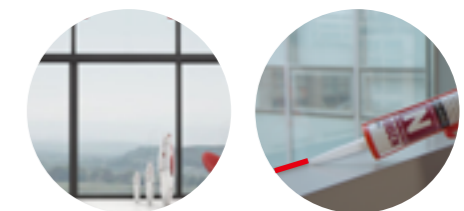
### Neutral silicone sealant for glazing(Premium)

- Application
  - General glazing(Not recommendable for pair-glass)
  - Sealing aluminium and PVC window frames(AL+Glass, PVC+Glass)
  - Sealing containers and prefabricated houses
  - Wide variety of sealing applications

- Characteristics
  - No acetic smell - Non sagging
  - Good adhesion to most materials

Tack Free	Less than 20 min	Cure Time	5 ~ 7 days
Specific Gravity	1.00 ± 0.05(Clear), 1.40 ± 0.02(Colored)	Hardness Shore A	30 ~ 40
Tensile Strength	10 ~ 15kgf/cm <sup>2</sup>	Elongation	300 ~ 400%
Movement Allowance	± 30%	Packaging	300ml ctg

Color: Clear, White, Gray, Black, Brown



# G2000

## For Glazing



### Acetic silicone sealant for glazing

- Application
  - General glazing in glass(Not recommendable for pair-glazing)
  - Sealing aluminium and PVC window frames(AL+Glass, PVC+Glass)
  - Sealing containers and prefabricated houses
  - Wide variety of sealing applications
- Characteristics
  - Excellent adhesion to most materials
  - Outstanding resistance to UV and weather conditions
  - Wide range of application between -20 °C and 50 °C

Tack Free	Less than 15 min	Cure Time	6 ~ 7 days
Specific Gravity	1.00 ± 0.02	Hardness Shore A	30 ~ 40
Tensile Strength	10 ~ 15kgf/cm <sup>2</sup>	Elongation	400 ~ 500%
Movement Allowance	± 30%	Packaging	300ml ctg

Color: Clear, White, Gray, Black, Brown



# A2000

## For interior & crack

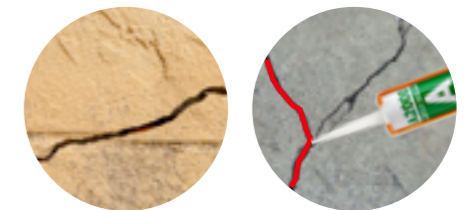


### Acrylic sealant for interior and crack repair

- Application
  - Sealing cracks and joints of concrete
  - Sealing gypsum board
  - Gluing interior materials and wallpaper
- Characteristics
  - Non-toxic
  - Paintable after curing
  - Easy to use

Tack Free	Less than 30 min	Cure Time	10 ~ 15 days
Specific Gravity	1.58 ± 0.02	Hardness Shore A	45 ~ 55
Tensile Strength	5 ~ 10kgf/cm <sup>2</sup>	Elongation	100 ~ 200%
Movement Allowance	± 10%	Packaging	300ml ctg

Color: White, Gray



# S2000

## For Kitchen & Bathroom

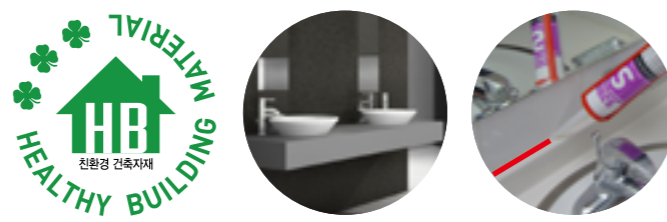


### Sanitary silicone sealant for hygienic sealing

- Application
  - Sealing in damp places like bathroom and kitchen etc.
  - The places to be protected from mildew
- Characteristics
  - Resistant to bacteria and mildew
  - Excellent adhesion to sanitary surfaces
  - Very stable at high fluctuation of temperature

Tack Free	Less than 20 min	Cure Time	5 ~ 7 days
Specific Gravity	1.00 ± 0.02	Hardness Shore A	20 ~ 30
Tensile Strength	10 ~ 15kgf/cm <sup>2</sup>	Elongation	300 ~ 500%
Movement Allowance	± 50%	Packaging	300ml ctg

Color: Clear, Translucent, White, Ivory



# N9000

## For Stone & panel

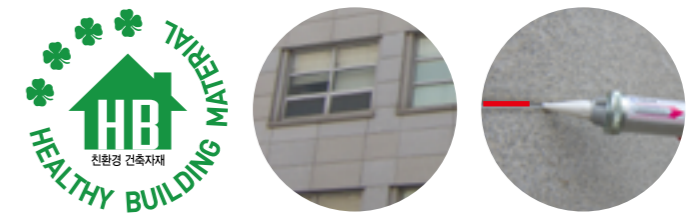


### Non-staining silicone sealant for stones and panels

- Application
  - Sealing and jointing marble and granite etc.
  - Suitable for aluminum composite panel
  - Jointing of aluminum curtain wall
- Characteristics
  - Outstanding resistance to UV and weather conditions
  - Non-pollution on marbles and panels

Tack Free	Less than 30 min	Cure Time	5 ~ 7 days
Specific Gravity	1.30 ± 0.02	Hardness Shore A	30 ~ 40
Tensile Strength	10 ~ 20kgf/cm <sup>2</sup>	Elongation	400 ~ 500%
Movement Allowance	± 30%	Packaging	500ml ssg

Color: White, Gray, Semi-light gray, Black, Light black, Brown, Light brown, Red brown, Limestone



# WS1000

For Exterior Panel



## Non-staining silicone sealant for weatherproofing(LM)

- Application
  - Aluminum composite panel and curtain wall
  - Joint of aluminum enameled panel
  - Sealing of exterior and interior materials
  - Joint of windows and door frames
- Characteristics
  - Wide movement capability up to 50%
  - Strong resistance to weather conditions
  - High elongation up to 700%

Tack Free	Less than 30 min	Cure Time	5 ~ 7 days
Specific Gravity	1.25 ± 0.02	Hardness Shore A	25 ~ 35
Tensile Strength	5 ~ 15kgf/cm <sup>2</sup>	Elongation	500 ~ 700%
Movement Allowance	± 50%	Packaging	300ml ctg

Color: Gray, Black



# BS2000

For Window Frames

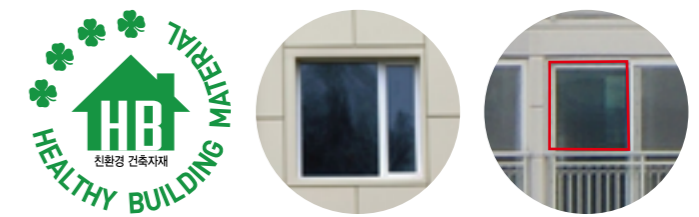


## High elongation silicone sealant for exterior window frames

- Application
  - Sealing and jointing window frames
  - Suitable for exterior windows at balcony
- Characteristics
  - Excellent elongation and recovery
  - Excellent adhesion to most construction materials
  - Outstanding resistance to UV and weather conditions

Tack Free	Less than 20 min	Cure Time	5 ~ 7 days
Specific Gravity	1.36 ± 0.02	Hardness Shore A	15 ~ 25
Tensile Strength	10 ~ 15kgf/cm <sup>2</sup>	Elongation	700 ~ 800%
Movement Allowance	± 50%	Packaging	300ml ctg / 500ml ssg

Color: White



# WS2000

For Exterior Panel

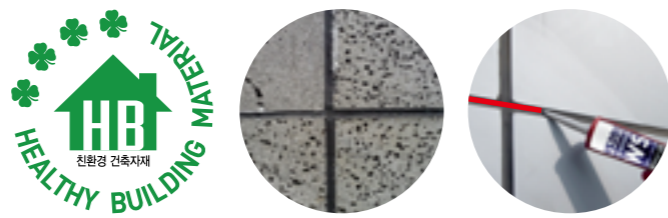


## Non-staining silicone sealant for weatherproofing(HM)

- Application
  - Aluminum composite panel and curtain wall
  - Joint of aluminum enameled panel
  - Sealing of exterior and interior materials
  - Joint of windows and door frames
- Characteristics
  - Strong resistance to weather conditions
  - Mid modulus allowing expansion or contraction by 30%
  - Excellent corrosion resistance

Tack Free	Less than 30 min	Cure Time	5 ~ 7 days
Specific Gravity	1.00 ± 0.05(Clear), 1.30 ± 0.02(Colored)	Hardness Shore A	30 ~ 40
Tensile Strength	10 ~ 20kgf/cm <sup>2</sup>	Elongation	400 ~ 500%
Movement Allowance	± 30%	Packaging	300ml ctg

Color: Clear, White, Gray, Black



# Pair Seal

For Pair Glazing



## Durable silicone sealant for pair glazing

- Application
  - Sealing and jointing of pair glass
  - Secondary sealant in insulating glass units
- Characteristics
  - Excellent resistance to UV
  - Outstanding adhesion to glass and aluminum

Tack Free	Less than 15 min	Cure Time	3 ~ 5 days
Specific Gravity	1.37 ± 0.02	Hardness Shore A	30 ~ 40
Tensile Strength	10 ~ 15kgf/cm <sup>2</sup>	Elongation	300~400%
Movement Allowance	± 30%	Packaging	500ml ssg

Color: Black



# PS2000

## For polycarbonate



**High functional silicone sealant for polycarbonate**

- Application
  - Sealing and jointing of polycarbonate sheets
  - Sealing and jointing of plastic as PMMA, etc.
- Characteristics
  - Primerless adhesion to most plastics
  - Excellent tensile strength and elasticity
  - Outstanding resistance to weather condition and durability

Tack Free	Less than 20 min	Cure Time	5 ~ 7 days
Specific Gravity	1.00 ± 0.02(Clear), 1.40 ± 0.02(Colored)	Hardness Shore A	30 ~ 40
Tensile Strength	10 ~ 15kgf/cm <sup>2</sup>	Elongation	300~500%
Movement Allowance	± 30%	Packaging	300ml ctg

Color: Clear, White, Gray, Black, Brown, Green



# FS1000

## For Fire Stop(Acrylic)



**Acrylic Sealant for fire resistance**

- Application
  - Sealing and jointing of electric equipment
  - Sealing penetrations of cables, cable trays, plastic and metallic pipes
  - Joint sealing of fire zone
- Characteristics
  - Fire resistance up to 120 min.
  - Resistant to smoke and moisture
  - Non-toxic water-based emulsion

Tack Free	Less than 1 hour	Cure Time	10 ~ 15 days
Specific Gravity	1.50 ± 0.05	Hardness Shore A	30 ~ 50
Tensile Strength	5 ~ 10kgf/cm <sup>2</sup>	Elongation	100 ~ 150%
Movement Allowance	± 10%	Packaging	300ml ctg

Color: Gray



# HR2000

## For Heat Resistance



**High temperature resistant silicone sealant**

- Application
  - Sealing industrial ovens, boilers, moving oven belts, and fixed heaters
  - Bag filters on smoke stacks
  - Sealing & encapsulating heated elements in appliances
  - Windows in oven doors
  - Flues on gas appliances and flanged pipe joints
- Characteristics
  - Heat-resistance to continuous exposure at 50 °C to 260 °C
  - Heat-resistance to intermittent exposure up to 300 °C
  - Excellent resistance to weather

Tack Free	Less than 15 min	Cure Time	5 ~ 7 days
Specific Gravity	1.04 ± 0.02	Hardness Shore A	20 ~ 30
Tensile Strength	10 ~ 15kgf/cm <sup>2</sup>	Elongation	300 ~ 500%
Movement Allowance	± 50%	Packaging	300ml ctg

Color: Gray, Red



# FS2000

## For Fire Stop(Silicone)



**Silicone sealant for fire resistance**

- Application
  - Sealing gaps of duct, cable tray & dry wall
  - Sealing & jointing electric facilities
  - Joint sealing of fire zone
- Characteristics
  - Fire resistance up to 120 min.
  - Based on neutral silicone
  - Resistant to smoke and moisture

Tack Free	Less than 20 min	Cure Time	7 days
Specific Gravity	1.34 ± 0.02	Hardness Shore A	25 ~ 35
Tensile Strength	15 ~ 20kgf/cm <sup>2</sup>	Elongation	200 ~ 250%
Movement Allowance	±30%	Packaging	300ml ctg

Color: Gray, Black



# CR2000

For Clean Room



## Low VOC silicone sealant for clean room

- Application
  - Jointing of clean room
  - For food, pharmacy and electronics industry
- Characteristics
  - Low VOC
  - Strong adhesion without primer on most materials
  - Excellent corrosion resistance

Tack Free	Less than 15 min	Cure Time	3 ~ 5 days
Specific Gravity	1.23 ± 0.02	Hardness Shore A	30 ~ 35
Tensile Strength	15 ~ 20kgf/cm <sup>2</sup>	Elongation	400 ~ 450%
Movement Allowance	± 30%	Packaging	300ml ctg

Color: White, Gray



# Nuri BOND Products

## HB350

Hybrid adhesive for high tack



- Application
  - Available for both interior and exterior
  - Bonding materials to wall and ceiling
  - Gluing heavy weight materials
- Characteristics
  - Super initial tack and fastest finishing
  - Minimizing physical support after application
  - Strong adhesion to a variety of substrates
  - Paintable after curing
  - Solvent and isocyanate free

Tack Free	Less than 10 min	Cure Time	3.5mm/day
Specific Gravity	1.5	Hardness Shore A	55
Tensile Strength	30Kgf/cm <sup>2</sup>	Packaging	300ml ctg

Color: White

# HB1000

For Repair



## Hybrid sealant for repair of cracks

- Application
  - Sealing marbles and stone where non-pollution is needed
  - Maintenance of indoor and outdoor cracks
  - Filling cracks where water-proof is required
- Characteristics
  - No solvent and no isocyanate
  - Excellent weather resistance and high elasticity
  - Strong adhesion to most materials
  - Paintable with various kinds of paints

Tack Free	Less than 30 min	Cure Time	7 ~ 14 days
Specific Gravity	1.52 ± 0.02	Hardness Shore A	35 ~ 45
Tensile Strength	10 ~ 20kgf/cm <sup>2</sup>	Elongation	400 ~ 500%
Movement Allowance	± 30%	Packaging	300ml ctg / 500ml ssg

Color: White, Gray, Green



## HB050

Hybrid adhesive for multi-purpose



- Application
  - Fixing building materials requiring strong adhesion
  - Bonding insulation and acoustic panels
  - Bonding aluminum composite
  - Bonding PVC and wooden panels
- Characteristics
  - Strong adhesion to a variety of substrates
  - Excellent elasticity restoring force
  - Paintable after curing
  - Solvent and isocyanate free

Tack Free	Less than 10 min	Cure Time	2.5mm/day
Specific Gravity	1.55 ± 0.02	Hardness Shore A	50~55
Tensile Strength	25~28Kgf/cm <sup>2</sup>	Packaging	300ml ctg

Color: White

# HB030

Hybrid adhesive for Crystal



- Application
  - Interior applications where transparency is required
  - Bonding metals and most materials
  - Fixing mirrors and glass decorations
  - Bonding glass panes to aluminum or anodized frames

- Characteristics
  - Ideal for use in bonding materials where a transparent bond is required
  - Elastic adhesive with excellent flexibility
  - Solvent and isocyanate free

Tack Free	Less than 10 min	Cure Time	3.5mm/day
Specific Gravity	1.04	Hardness Shore A	28
Tensile Strength	20Kgf/cm <sup>2</sup>	Packaging	300ml ctg
Color: Clear			

# SM9000

Spray Adhesive



- Application
  - Perfect bonding of paper label, fiber, cork, glass, metal, corrugated cardboard

- Characteristics
  - Easy to use with spray type
  - Excellent initial tack
  - Rapid application in wide area available

\* Packaging: 450ml/can, 12cans/box

## PU-Foam Products



### Product Line-up of PU-Foam

Type	Product	Curing Type	Packaging
Multi-purpose PU-Foam	URI FOAM	Moisture curing	750ml/can, 15cans/box
Fire Resitance PU- Foam	URI FOAM MAX B2	Moisture curing	880ml/can, 15cans/box
Multi-purpose PU-Foam	WORLD FOAM	Moisture curing	750ml/can, 15cans/box
Fire Resitance PU- Foam	TYTAN 65 B2	Moisture curing	1,080g/can, 15cans/box
PU-Foam Cleaner	Foam Cleaner		550ml/can, 20cans/box



# URI FOAM

Multi-purpose PU-Foam



## Description

URI FOAM is a multi-purpose polyurethane foam which ensures a tight sealing for cracks or openings.

### ●Application

- Fixing door and widow frames
- Filling joints between panels
- Filling wall gaps and cracks
- Sealing holes around pipes and electrical outlets

### ●Characteristics

- High adhesion strength.
- Eliminate vibration and reduce noise.
- Environment friendly.

Tack Free Time	10 ~ 15min.(at 20°C, 60% RH)	Full Cure Time	24hour(at 20°C, 60% RH)
Thermal Resistance (after curing)	40 ~ 60min.(at 20°C, 60% RH)	Yield	30 ~ 40L
Thermal Resistance (after curing)	-30°C ~ +80°C	Thermal Conductivity	0.032Wm.k(23°C, 50%RH)
Water Absorption	1.5g / 100 cm <sup>2</sup>	Combustibility Fire Class	B3

# KORI FOAM

Multi-purpose PU-Foam



## Description

KORI FOAM is a multi-purpose polyurethane foam which ensures a tight sealing for cracks or openings.

### ●Application

- Fixing door and widow frames
- Filling joints between panels
- Insulating the walls
- Filling wall gaps and cracks
- Sealing holes around pipes and electrical outlets

### ●Characteristics

- High adhesion strength
- CFC-free & environment friendly
- Eliminate vibration and reduce noise

Tack Free Time	10 ~ 15min.(at 20°C, 60% RH)	Full Cure Time	24hour(at 20°C, 60% RH)
Cutting Time	40 ~ 60min.(at 20°C, 60% RH)	Density	17 ~ 25kg/m <sup>3</sup>
Thermal Resistance (after curing)	-30°C ~ +80°C	Thermal Conductivity	0.020 ~ 0.040Wm.k(Avg Temp. +20°C)
Water Absorption	1.0 ~ 2.0g / 100 cm <sup>2</sup>	Combustibility Fire Class	B3

# URI FOAM MAX

Fire Resistance PU-Foam



## Description

URI FOAM MAX is a self-extinguishing polyurethane foam.

### ●Application

- Filling gaps where fire resistance is required
- Fixing door and widow frames
- Insulating of heating and cooling systems
- Filling joints between panels & wall gaps
- Sealing holes around pipes and electrical outlets

### ●Characteristics

- Yield maximum 65L per can in the most optimum condition (20°C, 60%RH)
- High adhesion strength
- Excellent thermal insulation
- Eliminate vibration and reduce noise
- Environment friendly

Tack Free Time	10 ~ 15min.(at 20°C, 60% RH)	Full Cure Time	24hour(at 20°C, 60% RH)
Cutting Time	40 ~ 60min.(at 20°C, 60% RH)	Yield	60 ~ 65L
Thermal Resistance (after curing)	-30°C ~ +80°C	Thermal Conductivity	0.030W/m.k(23°C, 50%RH)
Water Absorption	1.4g / 100 cm <sup>2</sup>	Combustibility Fire Class	B2

# TYTAN<sup>65</sup> B2

Fire Resistance PU-Foam



### ●Application

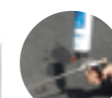
- Filling gaps where fire resistance is required
- Fixing door and widow frames
- Insulating of heating and cooling systems
- Filling joints between panels & wall gaps
- Sealing holes around pipes and electrical outlets

### ●Characteristics

- Yield maximum 65L per can in the most optimum condition (20°C, 60%RH)
- High adhesion strength
- Fire retardant meeting Din4102 Fire Class B2 Standard
- Environment friendly

Tack Free Time	10 ~ 15min.(at 20°C, 60% RH)	Full Cure Time	24hour(at 20°C, 60% RH)
Cutting Time	40 ~ 60min.(at 20°C, 60% RH)	Density	17 ~ 25kg/m <sup>3</sup>
Thermal Resistance (after curing)	-30°C ~ +80°C	Thermal Conductivity	0.020 ~ 0.040W/m.k(Avg Temp. +20°C)
Water Absorption	1.0 ~ 2.0g / 100 cm <sup>2</sup>	Combustibility Fire Class	DIN 4102 B2

# Foam Cleaner



### ●Application

- Polyurethane Foam Cleaner is used for removing the residue of polyurethane foam and cleaning the spray gun.
- Cleansing should be done before the residue of polyurethane foam solidifies.
- Applicable with both gun and nozzle cap

# Aerosol Products



## Aerosol for Industrial use

Use	Product	Packaging
Zinc Coating Spray	SM5001	420ml/can, 20cans/box
Silver Zinc Coating Spray	SM5002	420ml/can, 20cans/box
Stainless Steel Coating Spray	SM5004	420ml/can, 20cans/box
Silver Coat	SM5005	420ml/can, 20cans/box
High Temperature Paint	SM5008	420ml/can, 20cans/box
Anti-spatter Agent	SM5009	420ml/can, 20cans/box
New Spray Black-All	SM5010	420ml/can, 20cans/box
Spray Lubricant	SM6000	360ml/can, 24cans/box
Adhesive & Tar Remover	SM7005	420ml/can, 20cas/box



## Aerosol for Car

Product	Packaging
Cleaner(Air conditioner & Heater)	280ml/can, 12cans/box
Cleaner(Choke & Carb)	550ml/can, 20cans/box
SD1000(Underbody Coating Spray)	550ml/can, 20cans/box
Water Repellent Agent	250ml/can, 30cans/box

## Aerosol for Industrial use

# SM5001

## Zinc Coating Spray



- Application
  - Underbody of boat or ship, Heat exchanger
  - Water tank of ship, drainage pump of ship
  - Equipment or facilities on the sea
  - Pipe installed under ground, iron structure and fence etc.

- Characteristics
  - Excellent rust prevention effect
  - Good adhesion, strong heat-resistance and chemical-resistance
  - Applicable area : approx. 3m<sup>2</sup>/can

\* Color: Dark gray  
\*420ml/can, 20cans/box

# SM5002

## Silver Zinc Coating Spray



- Application
  - Rust prevention of iron structure
  - Maintenance of zinc galvanizing structure

- Characteristics
  - Excellent rust prevention
  - Good adhesion, excellent weldability
  - Strong heat-resistance and chemical-resistance
  - Applicable area : approx. 3m<sup>2</sup>/can

\* Color: Light gray  
\*420ml/can, 20cans/box

# SM5004

## Stainless Steel Coating Spray



- Application
  - Ship, automobile, electric facilities of power plant
  - Outdoors iron structure, Water pipes etc.

- Characteristics
  - Excellent rust prevention effect
  - Good adhesion, strong heat-resistance and chemical-resistance
  - Applicable area : approx. 3m<sup>2</sup>/can

\* Color: Gray  
\*420ml/can, 20cans/box

# SM5005

## Silver Coat



- Application
    - Rust prevention coating
    - Maintenance of coating
    - Protective coating for welded, drilled cut part
    - Protective coating for beach structure and ships
  - Characteristics
    - Excellent rust prevention
    - Good adhesion, excellent weldability
    - Strong heat-resistance and chemical-resistance
    - Applicable area : approx. 3m<sup>2</sup>/can
- \* Color: Silver  
\*420ml/can, 20cans/box

# SM5010

## New Spray Black-All



- Application
    - Black graphite coating with ultra-fine grain graphite
  - Characteristics
    - Superior rust prevention, anti-abrasion, good heat-proof and oil-proof
    - Easy to spray on the spot
- \* Color: Black  
\*420ml/can, 20cans/box

# SM5008

## High-temperature Paint



- Application
    - Stove, boiler, heating machinery and steam line etc.
  - Characteristics
    - Special paint for heat-resistance up to 500 °C
    - Good prevention of high temperature steel surface from corrosion
- \* Color: Black  
\*420ml/can, 20cans/box

# SM6000

## Spray Lubricant



- Application
    - Stopping squeaks
    - Loosening rusted parts
    - Softening sticky mechanism
    - Dehumidifying moisture
  - Characteristics
    - Excellent rust prevention and lubrication
    - Excellent penetration into narrow gaps
- \* Color: Light brown  
\*360ml/can, 24cans/box

# SM5009

## Anti-spatter Agent



- Application
    - Prevention of welding spatter from adhesion
  - Characteristics
    - Excellent weldability
    - Improving working condition
- \* Color: Light yellow  
\*420ml/can, 20cans/box

# SM7005

## Adhesive & Tar Remover



- Application
    - Removal of adhesive & tar stains
    - Removal of sticker & gum stains
    - Removal of pen marks
  - Characteristics
    - Easy to use
- \* Color: Clear  
\*420ml/can, 20cans/box

Aerosol for Car

# Cleaner

## Air conditioner & Heater Cleaner

- Application
  - Removal of mold and dust in the air conditioner and heater
  - Sterilizing and removal of smell
- Characteristics
  - Excellent effect of sterilization
  - Prevention of respiratory disease and keep clean environment for allergy patient and children by removing root cause of bad smell
  - Easy to use

\*280ml/can, 12cans/box



# Cleaner

## Choke & Carb Cleaner

- Application
  - Removal of filths and sediments in injector, carburetor and automatic choke devices without scathe to the engine parts of the cars
- Characteristics
  - Spraying cleaner at the end part of choke valve shaft
  - Cleaning inside carburetor to change the engine speed lightly
  - Activating counterbalance up and down until butterfly valve moves lightly

\*550ml/can, 20cans/box



# SD1000

## Underbody Coating Spray

- Characteristics
  - Quick drying with elastic rubber-based coating to form strong coating film
  - Excellent protection of car's underbody from rust, corrosion, road salt, dust, smoke, extreme cold and heat, sand and pebble

\*550ml/can, 20cans/box



# Water Repellent Agent

- Application
  - Water repellent for car glass window such as front glass window, rear glass window, side mirror
- Characteristics
  - No trace of water because water drops roll down on the surface of car window
  - Antipollution function removes dust easily.
  - Maximization of the effect of gloss
  - Easy to use

\*250ml/can, 30cans/box



# Coullking Gun



G-100(Plastic)



G-200(Plastic)



Cutter Gun



Skeleton Gun(Metal)



Turning Skeleton Gun(Metal)



Super Power Turning Gun(Metal)



Chemical Anchor Gun



Air Pressure Sausage Gun



Power Bulk Gun

# Foam Gun



Power Foam Gun



Nuri Gun



Foam Gun 311



Foam Gun 313



Foam Gun 323



Foam Gun 333

# Certification



ISO9001



ISO14001



JIS

# Color Table

Nuri Seal Color Table

Color/Item	N2000	N2000 PRO	G2000	A2000	S2000	PS2000	N9000	WS2000	WS1000	BS2000	Pair seal	HR2000	CR2000	FS1000	FS2000	HB1000
Clear		●	●		●	●		●								
Half clear	●				●											
White	●	●	●	●	●	●	●	●		●			●			●
Gray	●	●	●	●		●	●	●	●			●	●	●	●	●
Light gray	●															
Semi-light gray							●									
Ivory	●				●											
Gold	●															
Black	●	●	●			●	●	●	●		●				●	
Light black							●									
Brown	●	●	●			●	●									
Light brown							●									
Red brown							●									
Wood	●															
Cherry	●															
Green	●					●										●
Blue	●															
Red	●											●				
Limestone							●									

# Sealant Coverage Chart

Joint Size(mm)	Sealant Coverage			
	Width×Depth	Requirement per Meter	Linear Meter per 300ml	Linear Meter per 500ml
5 X 5		25ml	12M	20M
5 X 8		40ml	7.5M	12.4M
8 X 8		64ml	4.8M	8M
10 X 5		50ml	6M	10M
10 X 8		80ml	3.75M	6.25M
10 X 10		100ml	3M	5M
12 X 5		60ml	5.1M	8.5M
12 X 8		90ml	3.12M	5.2M
12 X 10		120ml	2.4M	4M
12 X 12		144ml	2.1M	3.5M
15 X 5		75ml	3.9M	6.5M
15 X 8		120ml	2.4M	4M
15 X 10		150ml	1.98M	3.3M
15 X 12		180ml	1.65M	2.75M
15 X 15		225ml	1.32M	2.2M
18 X 5		90ml	3.3M	5.5M
18 X 8		144ml	2.07M	3.45M
18 X 10		180ml	1.65M	2.75M
18 X 12		216ml	1.41M	2.35M
18 X 15		270ml	1.11M	1.85M
18 X 18		324ml	0.9M	1.5M
20 X 5		100ml	3M	5M
20 X 8		160ml	1.86M	3.1M
20 X 10		200ml	1.5M	2.5M
20 X 15		300ml	0.99M	1.65M
20 X 18		360ml	0.84M	1.4M
20 X 20		400ml	0.75M	1.25M